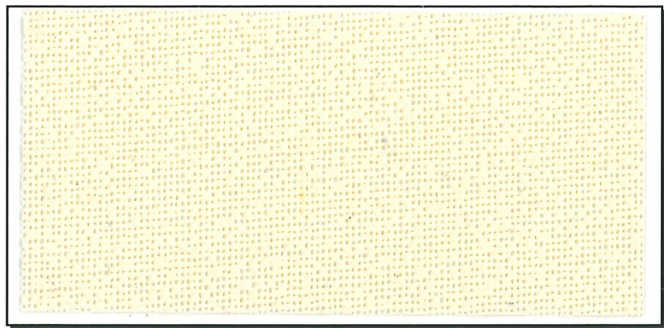


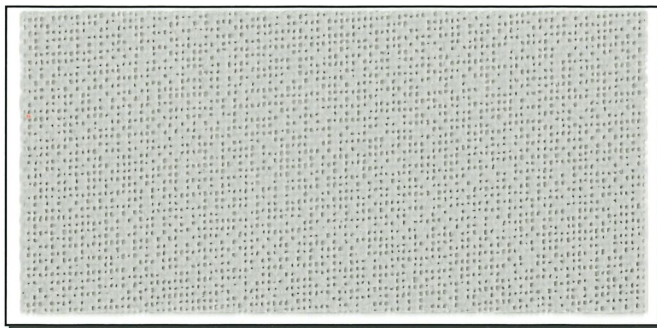


- BREATHABLE • MILDEW RESISTANT*
- ROT & TEAR RESISTANT
- DIMENSIONALLY STABLE

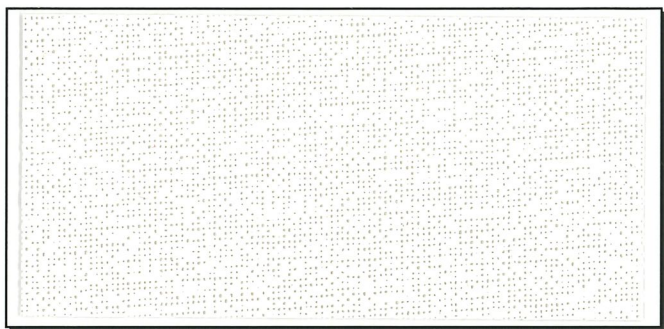
SEAT AND CUSHION UNDERLINING



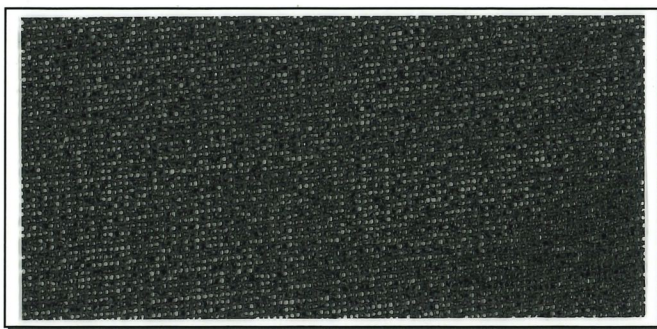
Beige - Item # 890724



Grey - Item # 890723



White - Item # 890725

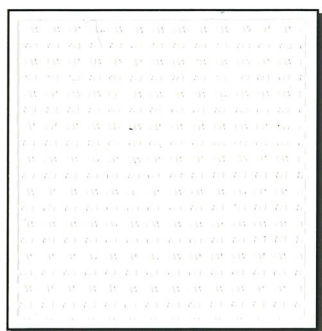


Black - Item # 890728

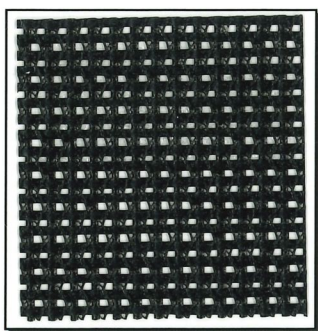
VCM VINYL COATED MESH

VCM 9 x 12

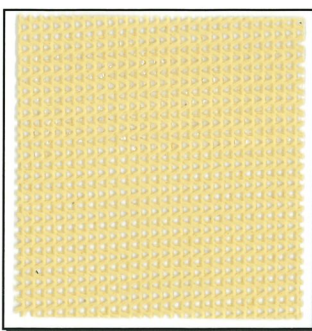
VCM 18 x 18



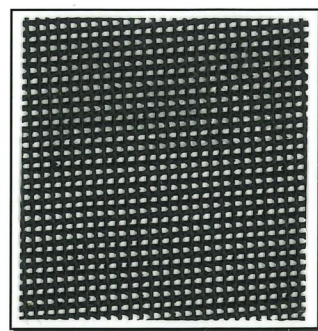
White - Item # 890715



Black - Item # 890718



Vanilla - Item # 8259271



Black - Item # 825917

Manufactured By:



**BRUIN PLASTICS
COMPANY INC.**

PO Box 700, 61 Joslin Road, Glendale, RI 02826 USA
(401)568-3081 • Toll-Free (800)556-7764 • Fax (401)568-0019
sales@bruinplastics.com • www.bruinplastics.com





SEAT AND CUSHION UNDERLINING

Product Properties	Test Method	Results
Base Fabric		3.20 Osnaburg Poly Cotton
Weight	5041	9 ± 1 oz. PSY
Width		54"
Put Up		75 yds / roll
Embossing		Skiver
Adhesion	5970	6 ± 2 lbs/2 in.
Tear Strength	5134 (warp x fill)	6 lbs x 6 ± 2 lbs
Tensile Strength	5100 (warp x fill)	80 x 70 ± 10 lbs/inch
Mildew Resistance*	ASTM G21-15	pass
Flame Resistance		Non-FR

VCM VINYL COATED MESH

Product Properties	Test Method	Results - VCM 9 x 12	Results - VCM 18 x 18
Base Fabric		9 x 12 1000 D Poly	18 x 18 500 D Polyester
Weight	5041	8 oz./y ² ± 1 oz	9 oz. /y ² ± 1 oz
Width		60"	62"
Put Up	yards/roll	200 or 250 yards	100 yards
Roll Weight	lbs	150-190 lbs / 200-250 lbs	97 lbs
Tear Strength	5134 (warp x fill)	60 x 60 lbs	50 x 50 lbs
Tensile Strength	5100 (warp x fill)	190 x 200 lbs	180 x 170 lbs/in
Adhesion	5970 (warp x fill)	8 x 8 lbs /2 in	8 x 8 lbs /2 in
Flame Resistance ⁺	5903	Non-FR	Non-FR
Mildew Resistance*	ASTM G21-15	Pass	Pass
UV Resistance			Resistant

Above values are average values, as tested in our laboratory or outside testing facilities. All productions are subject to variations. This information is not intended to be used as strict specifications. All data obtained in our laboratory or from outside testing facilities is considered accurate, however no warranty is expressed or implied.

+ Available in a FR formulation in production-run quantities. Additional charges apply.

Manufactured By:



**BRUIN PLASTICS
COMPANY INC.**

PO Box 700, 61 Joslin Road, Glendale, RI 02826 USA
(401)568-3081 • Toll-Free (800)556-7764 • Fax (401)568-0019
sales@bruinplastics.com • www.bruinplastics.com

*Contains Thor ACTICIDE® PDP biocide which includes the active ingredient DCOIT, a common requirement for ECHA Article 95.